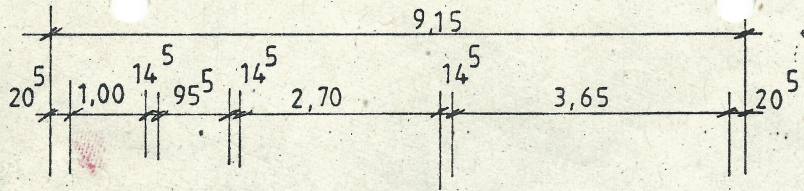
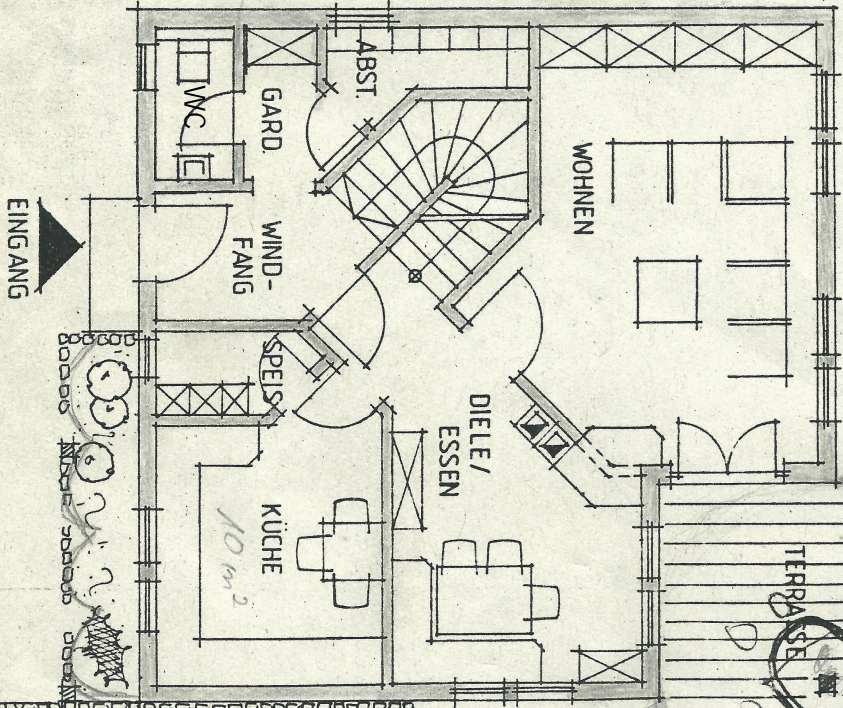


Handwritten arrow pointing North-West with the word "Nordwest" written vertically.

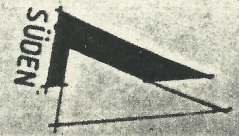
Handwritten arrow pointing East with the word "Osten" written vertically.



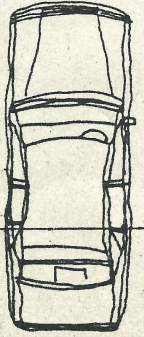
WOHNUNG BAUHERR



Handwritten arrow pointing South with the word "Süden" written vertically.

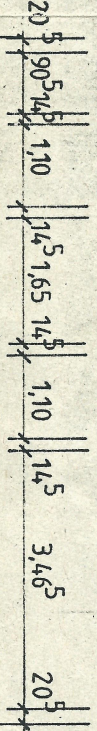
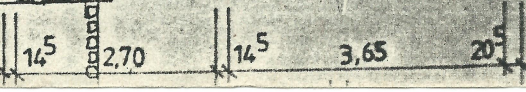


UNTERSTELLPLATZ FÜR PKW



6,00

32,5 m



EINGANG

9,21

Handwritten arrow pointing West with the word "Westen" written vertically.